

What material is provided in the Technology Gateway Kit?

- The boxed set includes two instructor manuals (one spiral-bound and one 3-hole punched) and 25 student handouts per problem scenario.
- Instructor manuals include competencies, scope and sequence charts, instructor notes, sample project scoring rubrics, lists of materials and equipment needed for each problem scenario.
- A curriculum orientation CD is available to assist teachers.
- Special teaching team training to facilitate teaching the Technology Gateway is available from the South Carolina Advanced Technological Education Center of Excellence (SC ATE).
- Additional information and an order form are available at www.scate.org.



What are the strengths of Technology Gateway?

- Targets recruitment, retention, and graduation of technicians.
- Supports diversity.
- Provides approach and curriculum that have been validated by industry.
- Shows relationships between subjects.
- Provides more opportunities for hands-on, inquiry-based learning.

How do I get started?

- Contact the SC ATE Center of Excellence.
- Designate faculty members in the appropriate disciplines to participate.
- Schedule selected teachers for SC ATE teaching team training.
- Recruit students.

For more information contact: SC ATE
(843) 676-8547
www.scate.org

Technology Gateway

© 2005, South Carolina Advanced Technological Education (SC ATE) Center of Excellence, Florence-Darlington Technical College. All rights reserved.

This material is based upon work supported by the National Science Foundation under Grants # DUE 9602440 and 9908409. Any opinions, findings, and conclusions or recommendations expressed do not necessarily reflect the views of the National Science Foundation.

South Carolina Advanced Technical Education (SCATE)

Center of Excellence
National Resource Center for Engineering Education

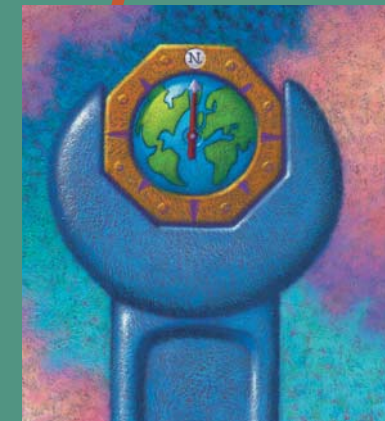
www.scate.org



www.fdtc.edu

South Carolina Advanced Technical Education

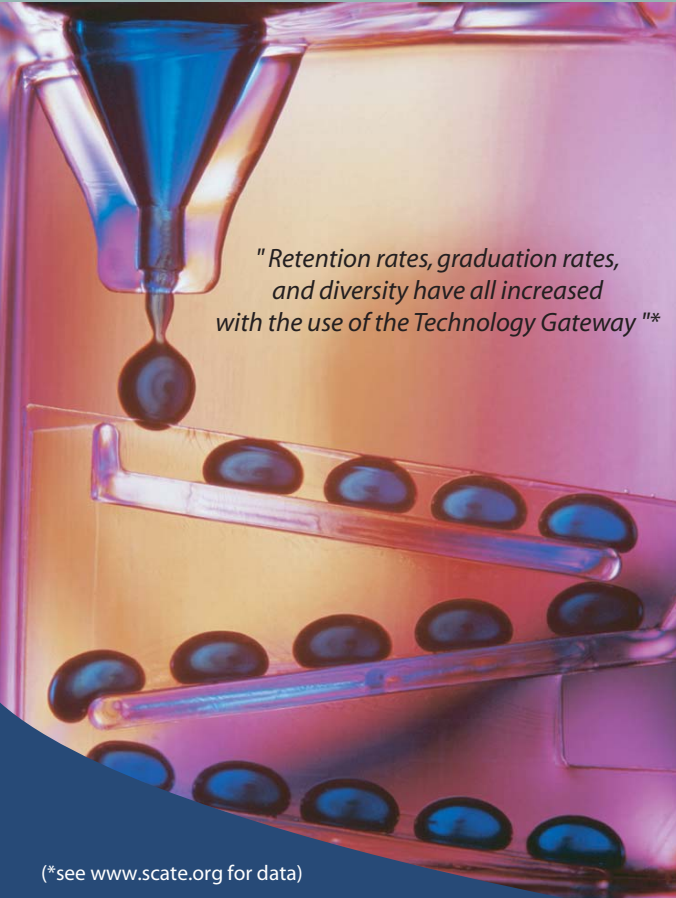
Center of Excellence



Technology Gateway Curriculum Kit

National Resource Center
for Engineering Technology
Education

(*see www.scate.org for data)



"Retention rates, graduation rates, and diversity have all increased with the use of the Technology Gateway""*